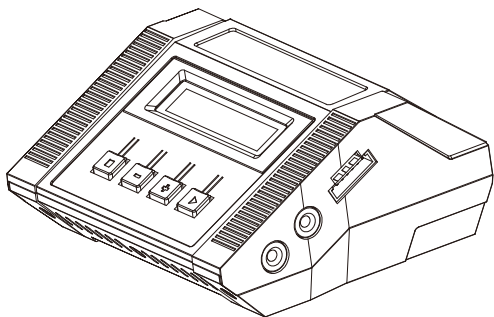


SplashDrone 3+ Balance Charger

Firmware Update Instruction for v4 firmware with STORAGE mode



Please download the latest Smart Balance Charger User Manual to match the firmware in the charger. www.swellpro.com/download.html

V1.4

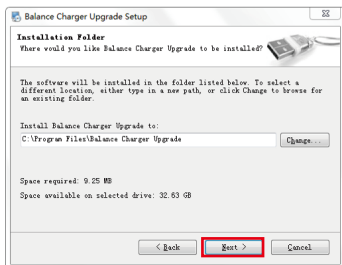
1. Install upgrade tool

1.1 PC

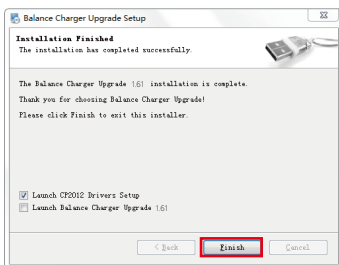
You need a Windows PC to perform this firmware update. Unfortunately, Macintosh computers are not currently supported.

1.2 Install Upgrade Tool

Download the latest charger upgrade package from swellpro.com and unzip it. Open the "Charger Update Tool" folder and double-click the "Balance Charger Upgrade Setup" installation file to start the installation. Please follow the steps below to complete the installation:



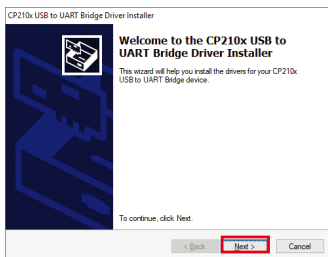
<1>



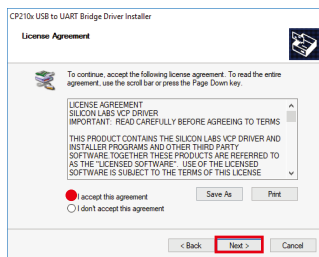
<2>

1.3 Installing the driver

After installing the upgrade tool, open the "CP210x_Windows_Drivers" folder and install the driver for your computer (depending on your computer system, choose the X64 or X86 package). Please follow the steps below to complete the installation:



<1>



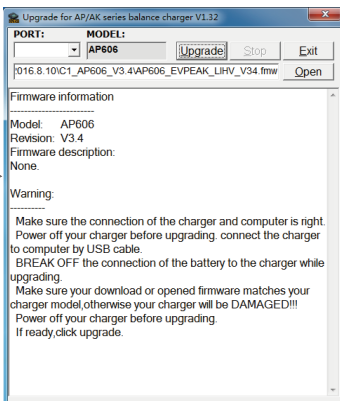
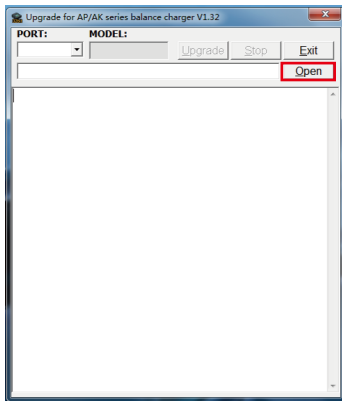
<2>

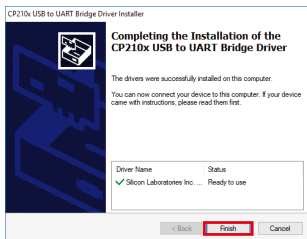
2.2 Upgrading the charger

a. Open the installed upgrade tool "Balance Charger Upgrade"



b. After opening the upgrade tool, click "Open" to open the firmware file you have downloaded and decompressed. The filename will have the extension .fmw





<3>

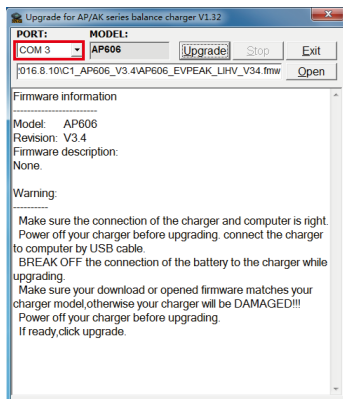
2. Upgrade the charger firmware

2.1 Prepare the charger

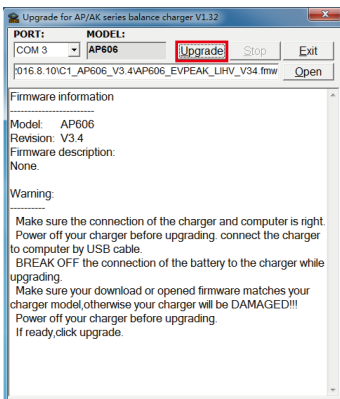
There is a USB interface on the left side of the charger. If the USB port is covered by a sticker, gently peel back the sticker to expose the USB port.



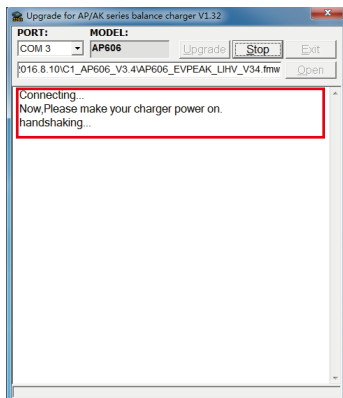
c. Connect the computer to the charger with the USB cable and select PORT:USB. The charger must be OFF.



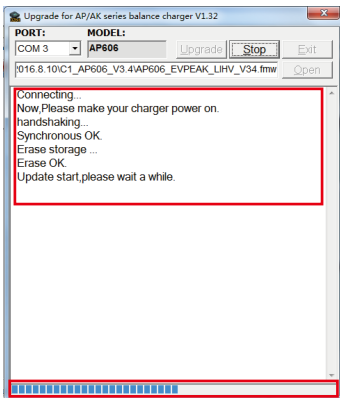
d. Click the "Upgrade" button and the software will attempt to connect to the charger.



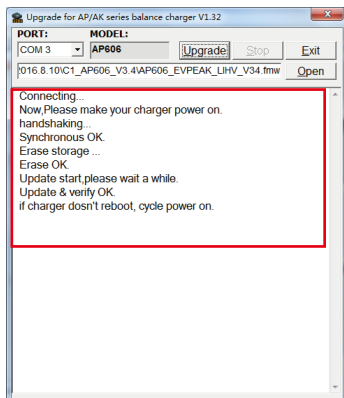
e. If a successful connection is made, the software will prompt to power ON the charger.



f. The charger will perform its upgrade. Do not power off the charger.



g. When the charger update is complete, the message "Update & Verify OK" will be displayed and the charger will restart.



Note:

If the software does not start the upgrade process when the charger is powered on, please disconnect the power supply 5 - 10sec and then power on the charger and complete the upgrade.